



The SonicWALL PRO 5060

PRO SERIES

Ultra-High Performance Intrusion Prevention and Network Security

Features and Benefits

- **Powerful deep packet inspection engine**
- **Comprehensive intrusion prevention**
- **Gateway-enforced network anti-virus**
- **Flexible content filtering capabilities**
- **1+ Gbps stateful packet inspection firewall**
- **500 Mbps hardware-accelerated IPSec VPN**
- **Distributed wireless LAN (WLAN)**
- **Advanced NAT, VoIP and networking modes**

The SonicWALL® PRO 5060 is a high-performance, multi-service gigabit network security platform that protects users and critical network resources from the dynamic, sophisticated threats that put today's corporate networks at risk.

The PRO 5060 integrates high-speed intrusion prevention, content filtering, gateway-enforced anti-virus, advanced wireless LAN features, stateful inspection firewall and IPSec VPN into a single, easy to deploy and manage solution. Available in both 10/100/1000 copper and copper/fiber interface versions, the PRO 5060 incorporates a wide array of networking and security features, making it the ideal solution for a multitude of applications.

Features and Benefits

Powerful Deep Packet Inspection Engine protects against malicious attacks at all layers of the network, whether they originate from outside or from internal sources

1,800+ signature **Intrusion Prevention Service (IPS)** database is dynamically updated to protect against sophisticated L2-7 threats, including those carried by instant messaging and peer-to-peer applications

Transparent mode allows operation as a **Stand-Alone, In-Line Intrusion Prevention** appliance for legacy firewall deployments

Gateway-enforced **Network Anti-Virus** detects and isolates worms, viruses and Trojans before they infect the network

Content Filtering Service optimizes workforce productivity and management of network resources

1+ Gbps Stateful Packet Inspection Firewall provides high-performance L2-4 protection

500 Mbps Hardware-Accelerated IPSec VPN throughput and advanced VPN features for the most demanding remote connectivity requirements

Distributed Wireless LAN (WLAN) allows seamless integration and management of advanced WLAN services

Advanced NAT, Voice over IP (VoIP) and Networking Modes allow the PRO 5060 to integrate into virtually any networking environment

Intuitive Configuration Wizards simplify even the most complicated tasks, including VPN set-up, NAT configuration and public server configuration



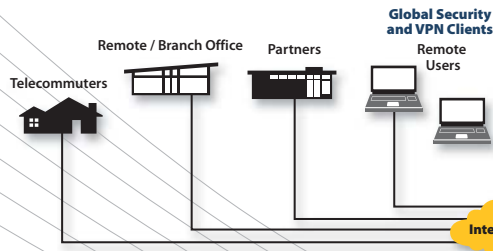
Applications

Central-site Primary Gateway

The PRO 5060 is ideal as a security gateway for critical, centralized networks. Its high-performance and advanced networking features allow seamless deployment into virtually any environment.

Features

- Suite of advanced security services for comprehensive multi-layer protection
- Zone security for segmenting internal groups
- Object-based management for easy administration
- Enhanced workforce productivity with Content Filtering Service
- DHCP server and DHCP relay ability
- Hardware and WAN/WAN Fail-over with round-robin, percent-based and spill-over load balancing

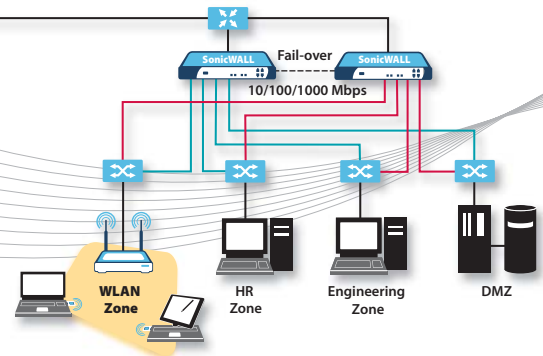


Distributed Office and Remote User Security

With its powerful VPN performance and enhanced NAT modes, the PRO 5060 is ideal for securely and easily linking remote/branch offices, partner sites and remote workers.

Features

- 500 Mbps hardware-accelerated IPSec VPN
- Advanced NAT modes for flexible site-to-site connectivity and management
- Compatibility with most major security and VPN appliance manufacturers
- Secondary VPN gateway support with "Dead Peer Detection" for automatic VPN Fail-over
- Easy-to-use Global Security Client/Global VPN Clients for remote users
- Third-party CA certificate support
- Flexible application of firewall rules for VPN traffic on a user or group basis
- DHCP over VPN capability for centralized IP management
- Award-winning Global Management System (GMS) and SonicWALL ViewPoint® for comprehensive management and reporting

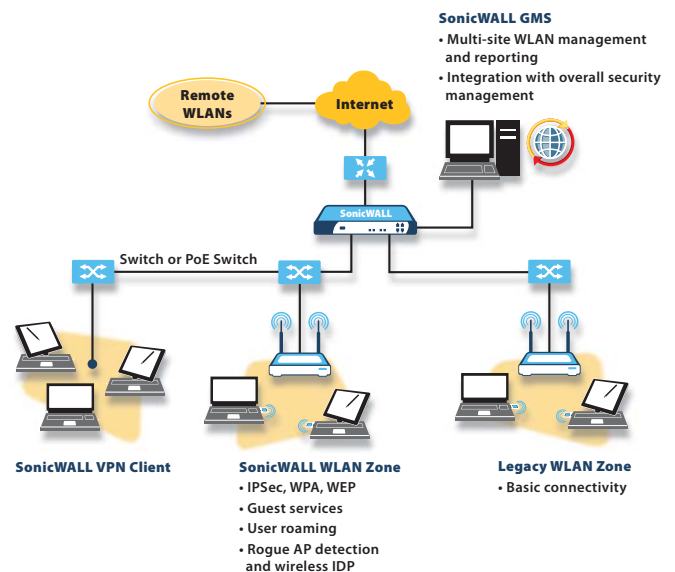


Distributed WLAN Security and Management

The PRO 5060's distributed WLAN capabilities rival those of the most sophisticated WLAN switch vendors on the market. With SonicWALL, you can easily integrate advanced WLAN services within the organization's existing network and security architectures. And with over 500 Mbps of IPSec VPN throughput, the PRO 5060 can aggregate a massive number of access points (APs) for large WLAN deployments.

Features

- Complete integration of WLAN security into overall network security management and reporting system
- Centrally manage and configure SonicPoints™ from PRO 5060 security appliances
- SonicPoints are intelligent, 802.11a/b/g satellite APs that allow wireless intrusion detection, secure wireless roaming, wireless guest services and more
- Standards-based WEP, WPA and IPSec encryption options
- Automatic discovery and provisioning enabled by the SonicWALL Discovery Protocol (SDP) and SonicWALL Simple Provisioning Protocol (SSPP)
- Utilizes SonicWALL's easy-to-use Global VPN Client software for secure IPSec wireless communications



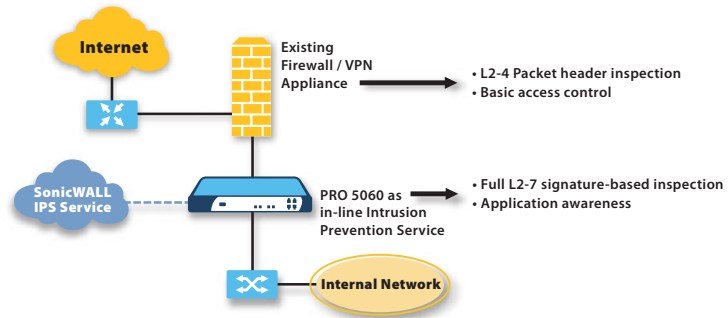
One of the
industry's most
comprehensive
intrusion
prevention
solutions

PRO 5060 In-Line Intrusion Prevention Mode for Legacy Firewall Deployments

The SonicWALL PRO 5060 is the industry's most comprehensive security and intrusion prevention solution, combining a dynamically updated database of over 1,800 attack and vulnerability signatures with a lightning-fast deep packet inspection engine that guarantees high levels of performance under load conditions. The PRO 5060 is ideal as an integrated security appliance, or as a stand-alone intrusion prevention appliance for legacy firewall deployments.

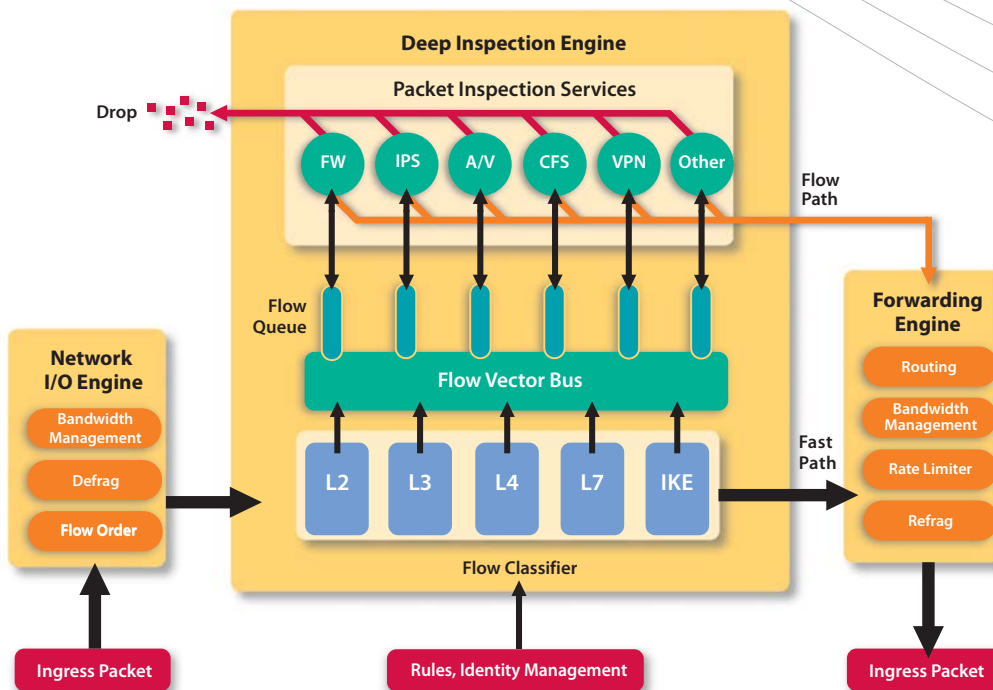
Features

- 1,800+ attack and vulnerability signature database is constantly updated to protect against the latest threats
- Maximum protection from Trojans, worms, DoS/DDoS attacks, and blended threats—even sophisticated polymorphic attacks
- Protection against threats carried by and management of instant messaging and peer-to-peer applications
- Inter-zone intrusion prevention protects against internal attacks targeting network segments
- Transparent-mode capability allows seamless integration into most existing network topologies



The nature of network security threats has evolved. While basic L2-4 firewall functionality is still a mandatory element of network security, new breeds of dynamic attacks are wreaking more havoc than ever before. Not only can these attacks render a traditional firewall useless, they also require a constantly updated attack database that guarantees protection. And they absolutely must have a hardware platform that can withstand the rigors of real-time intrusion prevention while maintaining high levels of performance.

SonicWALL Deep Inspection Architecture



SonicWALL's **Deep Inspection Architecture** is a highly scalable approach to multi-layer network security. Combining parallel stream processing with our custom-developed flow classification and flow vector bus technology, SonicWALL appliances deliver exceptional levels of performance under the most demanding of security requirements.

Specifications

SonicWALL PRO 5060

Firewall

Stateful Throughput*	1+ Gbps
Connections	750,000
Policies	15,000
Attack Protection	22 classes of DoS, DDoS and scanning attacks

VPN

3DES/AES Throughput	500 Mbps (MD5, 168-bit)
Site-to-Site Tunnels	4,000
Remote Access Tunnels	6,000 (2,000 VPN clients bundled)
Encryption	DES, 3DES, AES (128, 142, 256 bit)
Authentication	MDS, SHA-1
Key Exchange	Manual Key, PKI (X.509), IKE
XAUTH/RADIUS	Yes
L2TP/IPSec	Yes
Flexible VPN Termination	Any port for site-to-site and remote access tunnels
Certificate Support	Verisign, Thawte, Baltimore, RSA Keon, Entrust, and Microsoft CA for SonicWALL-to-SonicWALL VPN
Dead Peer Detection	Yes
DHCP through VPN	Yes
IPSec NAT Traversal	Yes, NAT_Tv00 and v03
Redundant VPN Gateway	Yes
Single-arm VPN	Yes

Deep Inspection Security Services

Intrusion Prevention Service (IPS)	Dynamic 1,800+ signature database prevents intrusions, worms, and application exploits. Peer-to-peer and instant messaging control and signature updates through Distributed Enforcement Architecture ¹
Content Filtering Service (CFS) Standard Edition	URL, keyword and content scanning ActiveX, Java Applet, and Cookie blocking ²
Gateway-Enforced Network Anti-Virus	HTTP/S, SMTP, POP3, IMAP and FTP Enforced McAfee™ Clients ³ E-mail attachment blocking
Bundled Features	ViewPoint reporting suite, 2,000 Global VPN clients, 90 days 8x5 support, services as described above

* Testing Methodology: RFC 2544

- 1: 1-year unlimited node service included
- 2: 90-day unlimited node service included
- 3: 90-day 50-user service included

SonicWALL Value-added Security Services

SonicWALL Internet security appliances integrate seamlessly with an expanding array of value-added security services to provide a comprehensive security solution. Enforced anti-virus, content filtering, and intrusion prevention can be enforced over both the wired and wireless LANs.

For more information on SonicWALL security services, including intrusion prevention, enforced anti-virus and content filtering, please visit our Web site at

<http://www.sonicwall.com/products/vpnsoft.html>

Networking

DHCP	Relay, internal server (4,096 leases)
NAT Modes	1:1, 1:many, many:1, many:many, flexible NAT (overlapping IPs), PAT, transparent mode
Authentication	RADIUS, X.509, internal user database
VoIP	Full H.323v1-4, SIP, gatekeeper support, inbound/outbound bandwidth management, call tracking and monitoring, full vendor interoperability

System

Zone Security	Yes
Object-based Management	Yes
Management	Local CLI, Web GUI, Syslog, SNMP v2, WebTrends Global management with SonicWALL GMS
Reporting	Comprehensive reporting and graphing, automated scheduling, bandwidth monitoring with SonicWALL ViewPoint reporting suite
WAN/WAN Fail-over	Yes, with percent-based, round robin and spill-over load balancing
Hardware Fail-over	Active/Passive
Standards	TCP/IP, UDP, ICMP, HTTP, HTTPS, IPSec, ISAKMP/IKE, SNMP, DHCP, PPPoE, L2TP, PPTP, RADIUS

Hardware

Interfaces	5060c: (6) 10/100/1000 auto-sensing copper Ethernet, (1) Serial port 5060f: (4) 10/100/1000 auto-sensing copper Ethernet, (2) SX/SC multimode fiber, (1) Serial port
Fans	Redundant high-capacity fans
Power Supply	350 W
Power Input	100-240 VAC, 60-50 Hz, 6 A
Max Power Consumption	120 W
Total Heat Dissipation	409 BTU
Processors	Intel Xeon main processor, Cavium Nitrox cryptographic processor
Certifications	ICSA Firewall 4.0, ICSA IPSec VPN 1.0d, EAL-2 and FIPS 140-2 pending
Dimensions	17.00(L) x 16.25(W) x 1.75(H) in 43.18(L) x 41.23(W) x 4.45(H) cm
Weight	15.55 lbs (7.05 kg)
Major Regulatory Compliance	EMC: FCC Class A, ICES Class A, CE, C-Tick, VCCI Class A, BSMI Class A, MIC, NOM
Safety	UL, cUL, TUV/GS, CB
Environment Temperature	40-105° F, 5-40° C Humidity 10-90% non-condensing



- SonicWALL PRO 5060c (US/Canada)
01-SSC-5381
- SonicWALL PRO 5060c (International)
01-SSC-5383
- SonicWALL PRO 5060c (Japan)
01-SSC-5385
- SonicWALL PRO 5060f (US/Canada)
01-SSC-5382
- SonicWALL PRO 5060f (International)
01-SSC-5384
- SonicWALL PRO 5060f (Japan)
01-SSC-5386
- SonicWALL 8x5 Support for PRO 5060
01-SSC-5620
- SonicWALL 24x7 Support for PRO 5060
01-SSC-5621
- SonicWALL International Support for PRO 5060
01-SSC-5622

SonicWALL PRO 5060c



6 10/100/1000 auto-sensing copper Ethernet interfaces

SonicWALL PRO 5060f



2 SX/SC multimode fiber interfaces
4 10/100/1000 auto-sensing copper Ethernet interfaces

SonicWALL PRO 5060 - back



Redundant, high-capacity fans

SonicWALL, Inc.

1143 Borregas Avenue
Sunnyvale CA 94089-1306

T +1 408.745.9600
F +1 408.745.9300

www.sonicwall.com

